



GMT MONTHLY MEMBERSHIP PROGRESS REPORT

Results as of: 8/31/2019

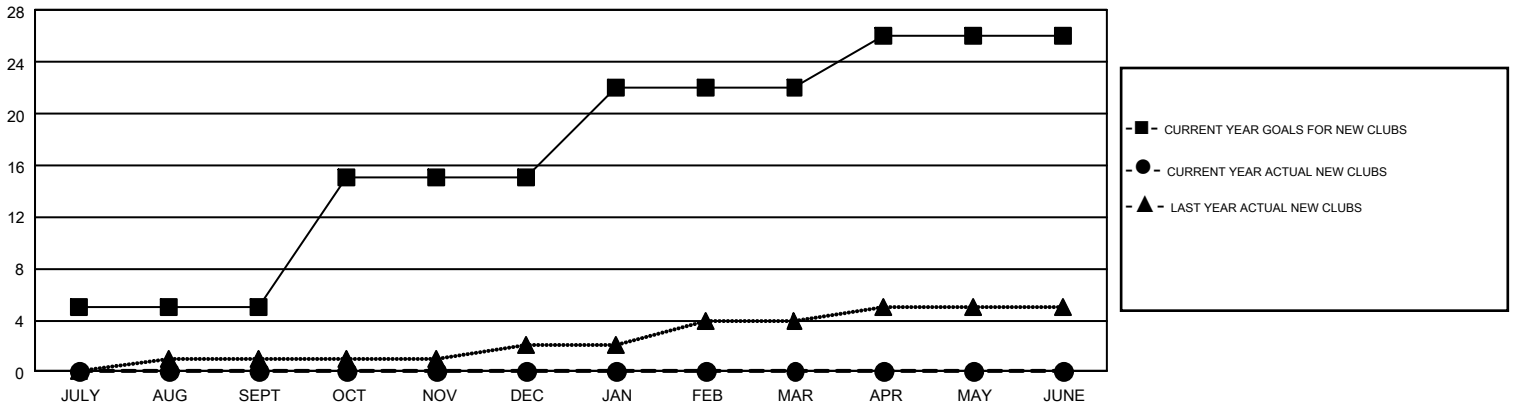
GMT Constitutional Area 5 - J, Group J

GMT: OPEN

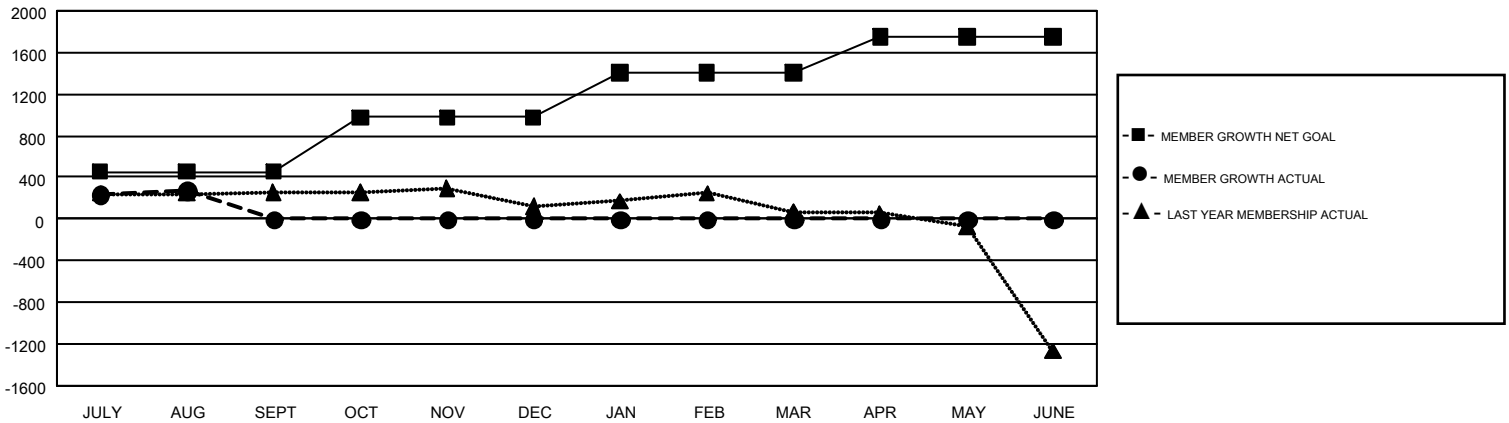
REPORT DOES NOT INCLUDE CLUBS IN UNDISTRICTED AREAS.

| Clubs | | | | Members | | | |
|-----------------------|---------------|-----------|---------------|-----------------------|------------------------|----------------------|--|
| RESULTS FOR 2019-2020 | | | | RESULTS FOR 2019-2020 | | | |
| QUARTER | NEW CLUB GOAL | NEW CLUBS | DROPPED CLUBS | QUARTER | MEMBER GROWTH NET GOAL | MEMBER GROWTH ACTUAL | DROPPED MEMBERS ACTUAL (including transfers) |
| JULY/AUG/SEPT | 5 | 0 | 1 | JULY/AUG/SEPT | 452 | 706 | 385 |
| OCT/NOV/DEC | 10 | 0 | 0 | OCT/NOV/DEC | 524 | 0 | 0 |
| JAN/FEB/MAR | 7 | 0 | 0 | JAN/FEB/MAR | 428 | 0 | 0 |
| APR/MAY/JUNE | 4 | 0 | 0 | APR/MAY/JUNE | 346 | 0 | 0 |

GOALS AND ACTUAL NEW CLUBS CUMULATIVE



GOALS AND ACTUAL MEMBERS CUMULATIVE



| | | |
|--|---|---|
| DROPPED CLUBS: 1 | 338 CLUBS OF 794 ADDED 1 OR MORE NEW MEMBERS | GENDER DISTRIBUTION MALE 23,749 (78.33%) FEMALE 6,572 (21.67%) |
| DROPPED MEMBERS DECEASED 34 CLUB CANCELLED 0 OTHER 351 TOTAL 385 | CLICK HERE FOR CUMULATIVE MEMBERSHIP DATA | TOTAL FAMILY UNIT MEMBERS 8,950 FAMILY MEMBERS PAYING HALF DUES 4,770 |